

#1

33" X 22"

American Standard**LAKELAND™ 33"
LARGE SINGLE BOWL SINK***"White Heat"*

AMERICAST®

**LAKELAND 33" LARGE SINGLE BOWL
KITCHEN SINK**

- Americast® brand engineered material
- Single bowl design
- Acid-resisting glossy porcelain finish
- Self-rimming or undercounter installation
- Silicone sealant supplied
- Available in 0, ①, 3, 4 or 5 faucet hole configuration.
- Customized Hole Punching Available
See Holes page KS-61.

Self-Rimming:

- 7193.000 No Holes
- 7193.001 1 Center Hole
- 7193.803 3 Holes
- 7193.804 4 Holes
- 7193.805 5 Holes

Undercounter Installation:

- 791123-100 Mounting Kit (consists of cut-out templates and mounting clips)

Note: For undercounter installation order self-rimming model with desired hole punchings along with 791123-100 mounting kit.

Nominal Dimensions: 838 x 559 x 241mm
(33" x 22" x 9-1/2")

Bowl sizes:

679mm (26-3/4") wide, 413mm (16-1/4") front to back 229mm (9") deep

Compliance Certifications -**Meets or Exceeds the Following Specifications:**

- ASME A112.19.4M for Americast Plumbing Fixtures
- ASTM E162 for Flammability
- NFPA 258 for Smoke Density



Shown with 4114.100 Lakeland Pull-Out
Kitchen Faucet

To Be Specified

- Color:
- Faucet*:
- Faucet Finish:
- Basket Strainer: 4331.013
- Soap Dispenser: 4503.115, Color:
- Trap:

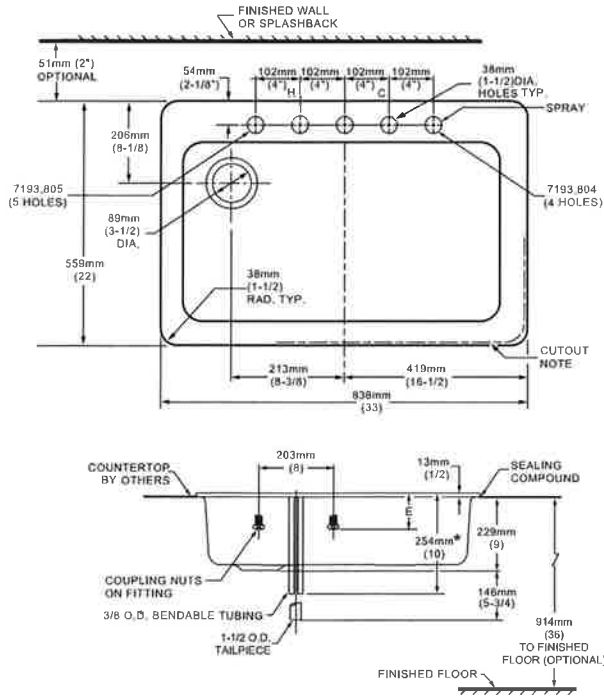
* See faucet section for available models

Optional Accessories

- Basin: 8193.300
- Bottom Sink Rack: 8193.120
- Colander: 8193.320
- Cutting Board: 8193.200
- Sink Rack: 8193.100
- Sink Rack with Two Utensil Holders: 8193.102
- Under Cabinet Storage: 8193.140

See reverse side for roughing-in dimensions.

7193.001/803/4/5 Self-Rimming



NOTES:

- 1 Recommended minimum countertop thickness
Wood - 19mm (3/4")
Marble and Solid Surface - 12mm (1/2")

1 COUNTERTOP CUTOUT for NEW INSTALLATIONS

756mm X 527mm with 25mm Radius (29-3/4" X 20-3/4" WITH 1" RADIUS)

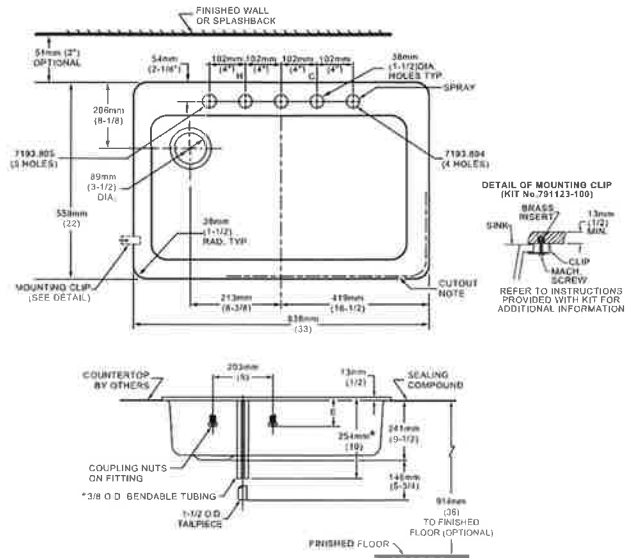
1 COUNTERTOP CUTOUT for REPLACEMENT INSTALLATIONS

756mm to 806mm X 527mm with 25mm Radius
(29-3/4" to 31-3/4" X 20-3/4" WITH 1" RADIUS)

FITTINGS NOT INCLUDED AND MUST BE ORDERED SEPARATELY.
PROVIDE SUITABLE REINFORCEMENT FOR WALL & COUNTERTOP SUPPORTS.

IMPORTANT: Dimensions of fixtures are nominal and may vary within the range of tolerances established by ANSI Standard A112.19.4
These measurements are subject to change or cancellation. No responsibility is assumed for use of superseded or voided leaflet.

7193.001/803/4/5 Undercounter Mount



NOTES:

- 1 Recommended minimum countertop thickness.
Wood - 19mm (3/4")
Marble and Solid Surface - 12mm (1/2")

1 TEMPLATE PROVIDED WITH MOUNTING KIT 791123-100 FOR UNDERCOUNTER, INSTALLATION AND COUNTERTOP CUTOUT.

FITTINGS AND UNDERCOUNTER MOUNTING KIT NOT INCLUDED AND MUST BE ORDERED SEPARATELY.

PROVIDE SUITABLE REINFORCEMENT FOR WALL & COUNTERTOP SUPPORTS.

- 1 IMPORTANT: Dimensions of fixtures are nominal and may vary within the range of tolerances established by ANSI Standard A112.19.4
These measurements are subject to change or cancellation. No responsibility is assumed for use of superseded or voided leaflet.